

Two additions to the Nepalese fauna of Olethreutinae (Tortricidae)

YOSHITSUGU NASU

153-2, Nakado, Hashimoto, Wakayama 648-0023, Japan; e-mail: fwik6205@mb.infoweb.ne.jp

In their comprehensive checklist of Microlepidoptera and Pyraloidea of Nepal, Robinson et al. (1995) listed 162 species of the family Tortricidae, including 71 Olethreutinae. Then Nasu (1996) added two species to the fauna. The examination of newly accessible material of Tortricidae collected in Nepal yielded two new records of Eucosmini for the fauna of this country. In the following lines I record these species and illustrate the adults and their genitalia.

The specimens were collected by Drs. Y. S. Bae and T. Ueda in 1994; they are deposited in the Entomological Laboratory, Osaka Prefecture University, Sakai, Japan. Images of the adults and genitalia were obtained using a Leica MZ16 binocular microscope with a Nikon Coolpix 995 digital camera; they were enhanced using Microsoft Photo Editor and Adobe Photoshop software.

Epiblema foenella (Linnaeus, 1758)

Figs 1, 2

Phalaena Tinea foenella Linnaeus, 1758, Syst. Nat. ed. 10: 536.

Epiblema foenella: Meyrick 1895: 496; Razowski 1999: 480; Brown 2005: 281.

Material. **Nepal:** Bagmati, Kathmandu, Mt. Phulchoki (2,075m), 2♂, 12.–13.vi.1994, at light (Bae & Ueda leg.); Gandaki, Pokhara City (850m), 2♂, 16.–19.vi.1994, at light (Bae & Ueda leg.).

Distribution. Europe, Russia, Nepal, Thailand, China, Mongolia, Korea, Japan. This species is widely distributed in Eurasia.

Remarks. The forewings normally have white falcate blotches and ocelloid patches. The blotches vary considerably in shape, sometimes taking the form of geniculate or straight bands, and may occasionally be obliterated. All specimens examined here have geniculate blotches and ocelloid patches darkened by gray suffusion.

Zeiraphera fulvomixtana Kawabe, 1974

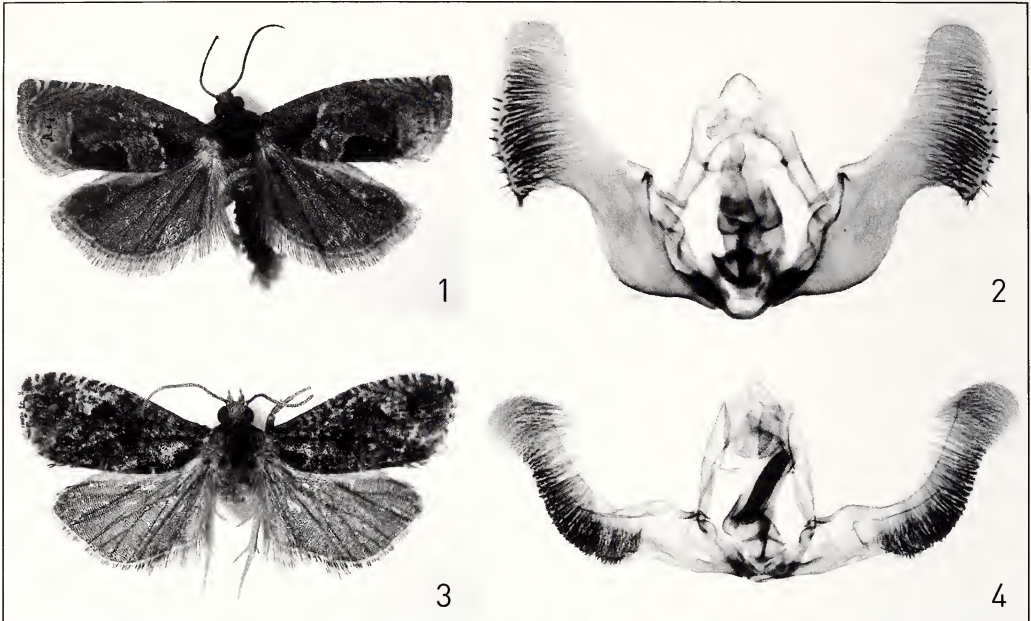
Figs 3, 4

Zeiraphera fulvomixtana Kawabe, 1974, Tyô To Ga 25: 98, figs 3, 10, 24; Byun et al. 1998: 181; Razowski 1999: 458; Brown 2005: 606.

Material. **Nepal:** Bagmati, Kathmandu, Mt. Phulchoki (2,075m), 1♂, 12.–13.vi.1994, at light (Bae & Ueda leg.).

Distribution. Nepal, Korea, Japan.

Remarks. The specimen has the dorsal part of the cucullus a little larger than that of Japanese specimens. This difference is attributed to intraspecific variation.



Figs 1–4. Adults and genitalia. 1, 2. *Epiblema foenella* (L.), ♂. 3, 4. *Zeiraphera fulvomixtana* Kawabe, ♂.

Acknowledgements

I thank Dr. Y. S. Bae, Incheon University, Incheon, Korea and Dr. T. Ueda, Osaka, Japan for providing the specimens.

References

- Brown, J. W. 2005. Tortricidae (Lepidoptera). Pp. 1–741. In: Landry, B. (ed.), World Catalogue of Insects 5. – Apollo Books, Stenstrup.
- Byun, B. K., Y. S. Bae & K. T. Park 1998. Illustrated Catalogue of Tortricidae in Korea (Lepidoptera). Pp. 1–317. In: Park, K. T. (ed.), Insects of Korea Series 2. – KRIBS & CIS, Chunchon.
- Meyrick, E. 1895. A Handbook of British Lepidoptera. – Macmillan and Co., London. 843 pp.
- Nasu, Y. 1996. *Hendecaneura axiotima* (Meyrick) (Lepidoptera, Tortricidae) and its allied new species from the Himalayan range. – Transaction of the lepidopterological Society of Japan 47: 209–214.
- Robinson, G. S, K. Sattler, M. Shaffer, K. R. Tuck & M. G. Allen 1995. Microlepidoptera and Pyraloidea of Nepal—a checklist and bibliography. – Tinea 14 (Supplement 2): 150–181.
- Razowski, J. 1999. Catalogue of the species of Tortricidae. Part V: Palearctic Eucosmina and Enarmoniina (Insecta: Lepidoptera). – SHILAP Revista de lepidopterologia 27: 437–506.